

Digital Industry Platform

YEONHAP SYSTEM

Super Global Leader in Manufacturing Innovation

yhs-corp.com

연합시스템

CEO's Greeting



Dear everyone,
This is CEO for Yeonhap System CO., LTD.

We are very pleased to be able to share the global union's constant challenges and management activities for coexistence and harmony with all stakeholders who care about the Yeonhap system. Yeonhap System is continuing its efforts in three categories: Environmental, Economic, and Social to achieve the goal of 'convergence with IT based on 50 years of manufacturing tradition.

✓ Creating Environmental Performance

We are establishing a management strategy that meets ISO14001 standards. All executives and employees of Yeonhap System are working together as one to protect the human environment through participation in the development of eco-friendly parts and steel balls for electric vehicles, and greenhouse gas reduction activities.

✓ Creating Economic Performance

Yeonhap System continues to invest in research and development to strengthen its competitiveness despite the global supply chain crisis. We are focusing on nurturing talent and revitalizing the organization that can contribute to business expansion along with strengthening IT development capabilities to lay the foundation for new growth businesses and establishing an integrated sales headquarters

✓ Creating Social Performance

Yeonhap System considers customer satisfaction as its top priority and strives to do its best to meet customer requirements, and is realizing the value of executives and employees through fair performance evaluation, compensation, and various welfare benefits systems. We are faithfully fulfilling our corporate social responsibilities by constantly communicating with our partners for mutual growth and carrying out company-wide social contribution activities for the local community.

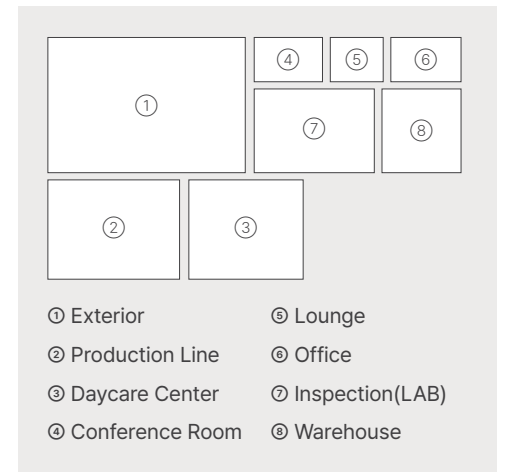
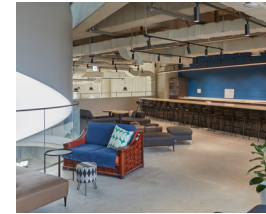
we ask for your generous support and interest for the sustainable growth and development of Yeonhap System.

We will continue to be a Yeonhap System that will not forget its corporate responsibilities and advance toward the future.

Yeonhap System CEO. Joonsaam Yoon.

Introduction to the Building of Yeonhap System

From highly productive workspaces, daycare centers, and large conference rooms



Manufacturing Process



Inquiry

- Client / Business meeting
- Detail analysis and production consultation



R&D

- Select of optimal material
- Examination process



Production

- Quality optimization process
- Meet target date of delivery



Quality Inspection

- Intermediate inspection of work-in-process
- Final inspection of completed items



Packing

- Keep an abundant inventory
- Customized packing for customers



Delivery

- Safe packing guaranteed
- Guaranteed delivery date and delivered to destination

One-Stop Solution for Product



ERP

Enterprise Resource Planning

MES

Manufacturing Execution System

WMS

Warehouse Management System

PLM

Product Lifecycle Management

CAD CAM

Computer Aided Design

BAROFACTORY

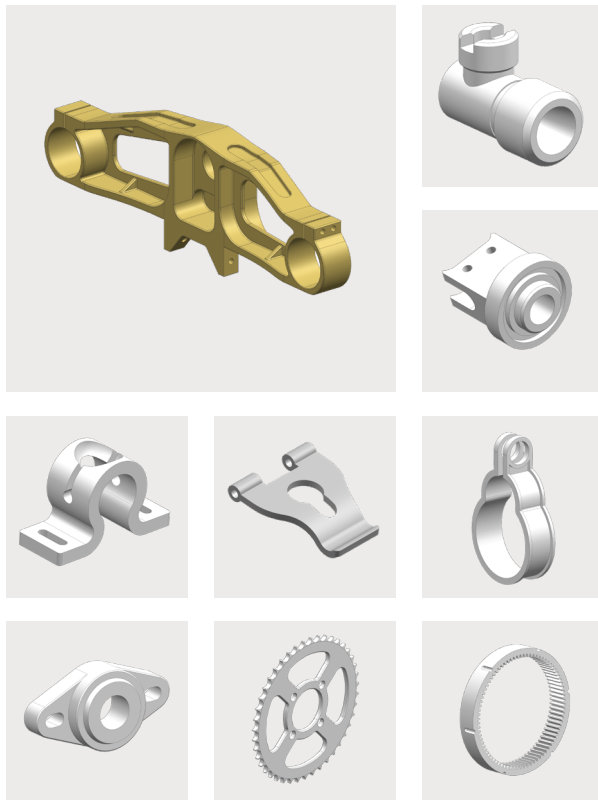
Real Time Monitoring for Production

R&D for Customizing | Parts by Industry Group

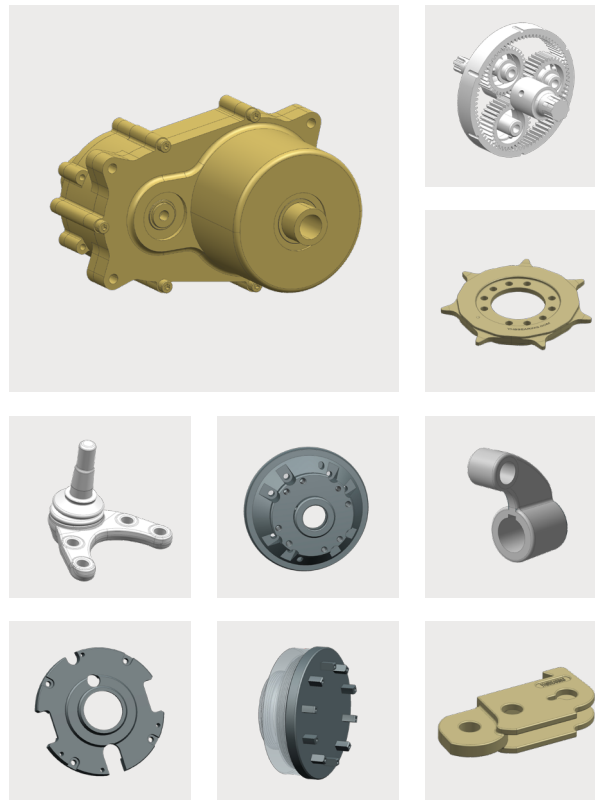
Capable of producing precision products used in various industries

- ✓ Ability for Development Capabilities by Inquiry
- ✓ Own Research and Development with Reverse Engineering
- ✓ Expert Organization of Design/Production/Quality Control

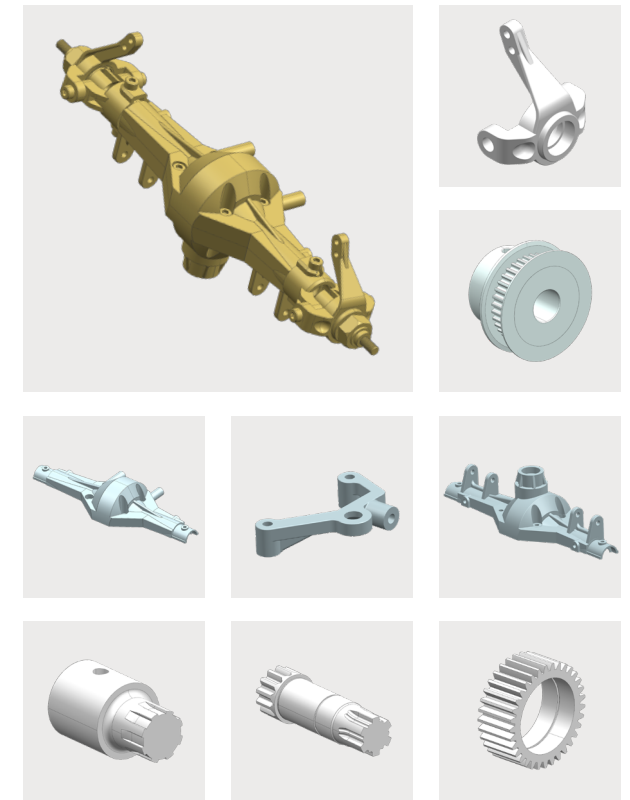
Defense Industry



Railway Industry



Robot Industry



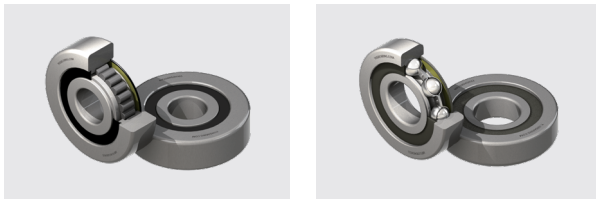
Main Products of Bearing

Capable of processing everything from ball bearings to a variety of high-quality bearings

- ✓ Ability for Development Capabilities by Inquiry
- ✓ Own Research and Development with Reverse Engineering
- ✓ Expert Organization of Design/Production/Quality Control

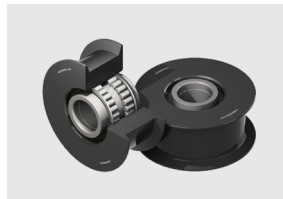
Roller & Ball Bearing for FORFLIFT

Mast Guide Bearing

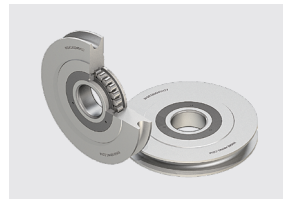


Track Roller Bearing for CRANE

Chain Guide Bearing

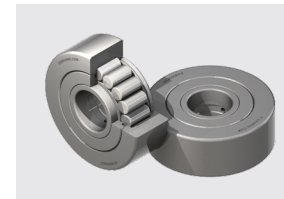


Wire Guide Bearing

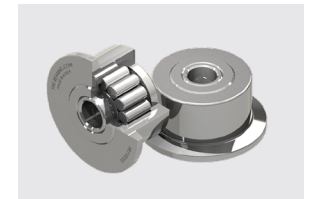


Track Roller Bearing for CONVEYOR

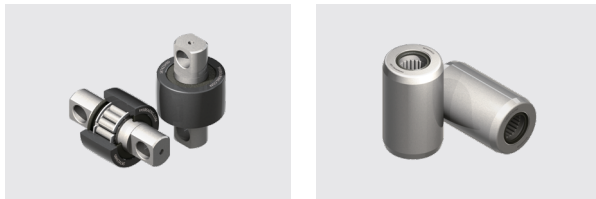
Chain Guide Bearing



Chain Guide Bearing

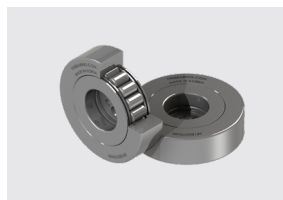


Side Guide Bearing

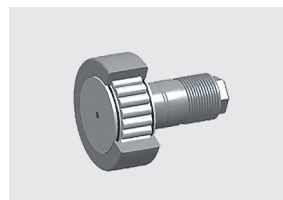


Track Roller Bearing

Yoke Type

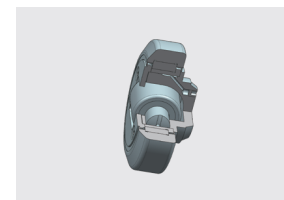


Stud Type



ETC Bearing

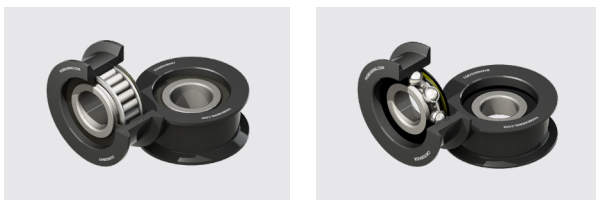
Complex Bearing



Special Bearing



Chain Sheave Bearing



Production - Main Machining Equipment

Equipped with multi-axis processing equipment capable of complex processing

9Axis PUMA SMX 2600ST



Main Spec

Manufacturer	DOOSAN
Bar dimension	102mm / 481mm
Maximum length	755mm

5Axis LYNX 220LSYC



Main Spec

Manufacturer	DOOSAN
Maximum dimension	481mm
Maximum length	755mm

Feature

C1 axis, C2 axis Clamp

3Axis PUMA V400M



Main Spec

Manufacturer	DOOSAN
Maximum dimension	496mm
Maximum length	461mm

Feature

M axis, Vertical turning machine

3Axis CUTEX-180A



Main Spec

Manufacturer	HWACHEON
Maximum dimension	350mm
Maximum length	328mm

Feature

M axis

- Complex Machining Functions such as 1, 2 spindle, B-axis, and Milling
- Number of tools held, 80 tools
- 0.0001 degree precise position control of the rotation axis-
- Production of ultra-precise shape processed products desired by customer

Measurement & Analysis Equipment

Quality Checked and Guaranteed to Meet Specified Standards

Shape Measurement

Measure whether the dimensions, shape, angle, etc. of the part match the drawing



3D Measuring Instrument

Model no.	HERO7106S
Manufacturer	DUKIN



Roundness Measuring Instrument

Model no.	RA-2200AS
Manufacturer	Mitutoyo



Illuminance / Shape Instrument

Model no.	SV-C3200S4
Manufacturer	Mitutoyo

Material Analysis

Invisible internal tissue measurement and material analysis



Rockwell Hardness Tester

Model no.	HR-530
Manufacturer	Mitutoyo



Vickers Hardness Tester

Model no.	HM-210B
Manufacturer	Mitutoyo

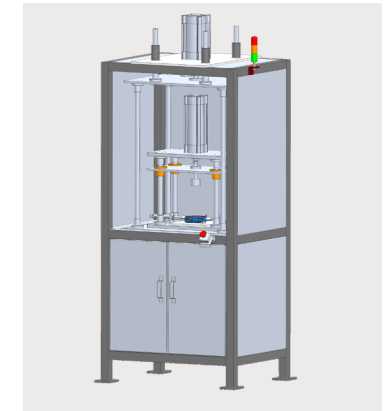


Metal Microscope

Model no.	XD30M-50X
Manufacturer	SUNNY

Performance Test

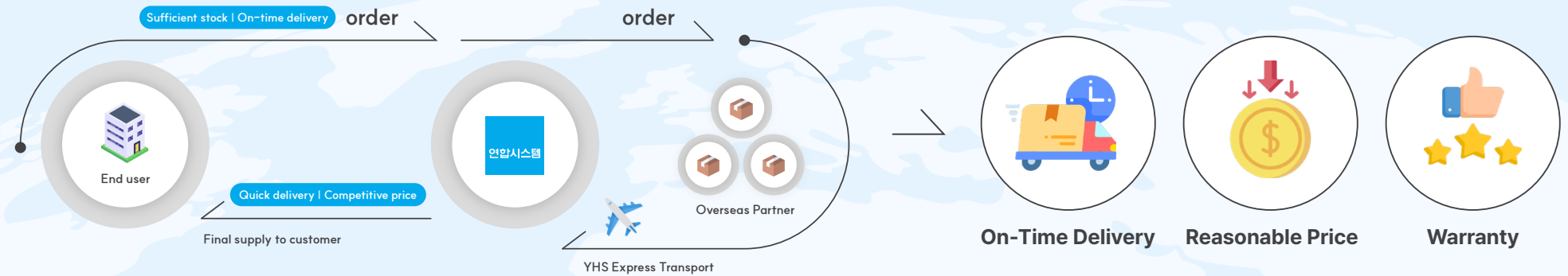
Check the durability of the product (check the shock load)



Impact Tester

Innovative Supply Process

To ensure that you can use the bearings you want when you need them,
we provide **the optimal service for distribution of bearings** with quick delivery and reasonable price.



BAROFACTORY

IIoT Smart Factory Service

We provide the service to check all of machine in factory as one screen.

Check the status of all machines with one monitor.

By identifying status and changes in real time and predicting the remaining and expected time of processed products in advance, quality is improved and production efficiency is maximized



**The service created
by manufacturing experts**

Practicality that is different from
other smart factory solutions



**Low Cost
Monthly Subscription Type**

Anyone can easily adopt this
monthly subscription service



**One Day
Installation!**

Installation is complete by
simply connecting a LAN cable
Easy to use
No training required



**Increased productivity
creates competitiveness**

Real-time process optimization.
Effective in reducing processing
time and improving productivity



BAROFACTORY

BAROFACTORY

IIoT Smart Factory Service

We can significantly increase production rate through BAROFACTORY system.

BAROFACTORY can significantly increase operation rate!!



Screen for Each Production Line



It is convenient to manage production history as you can see what work is being done, such as modifications and processing completion.

Process Status

No	기계명	기공명	완료예정일	실C/T	완료 / 목표	현재상태
1	Guma280	ODE7017	08/28 15:07	13:20	100 / 100(100%)	가공중
2	GamjaV280					진원꺼짐
3	Guma220	O5D444(WG266D937D30H)	08/28 15:07	03:20	100 / 100(100%)	수정중
4	Guma770LSY	O2D004(WGR26637D30HD)	08/28 15:07	16:04	100 / 100(100%)	일시정지
5	Gamja280LC	D5245(WG237D30H66D90)	08/28 13:01	03:20	100 / 100(100%)	가공완료
6	Gamja180A	OE4017(WGR180D40H237D)	-	09:59	100 / 100(100%)	대기중
7	Guma MIX2600ST	O2D03(C37D30H3-13S456)	08/28 13:01	03:20	100 / 100(100%)	알람발생
8	Gamja JSY2600ST	E5D2005(CS87D30H48)	08/28 13:01	03:20	100 / 100(100%)	비상정지

You can immediately check the status of all registered machines. The status is displayed on the screen so you can respond quickly to any situation.

Production History

날짜	기계명	기공명	목표량	생산량	달성률(%)	실제가동률(%)
12/12	Puma180A	JN_CS88602H303_3_MPF	250	62	25%	27%
		간헐				
12/12	Lynx220	CS86020H30-01-2	150	80	54%	59%
		간헐				
12/12	Lynx220LC	01238-0126-HE	191	78	41%	84%
		간헐				
12/12	Lynx220LSY	CS86020H30-02-3	199	95	48%	89%
		간헐				
12/12	Puma280	CS192020H30-05-2	78	77	99%	83%
		간헐				
12/12	Puma4000	CS67019H30-01-1	360	167	47%	80%
		간헐				

Simultaneously identify the cause and solve the problem! Reduce costs and increase production efficiency through data utilization.

Production Analysis

기계명	기공명	가공 시작 시간	가공 종료 시간	가공 완료 시간	가공 목표 시간	가공 실적	가공률	가동률			
Puma280	02003(CS12702H30-01-2)	08:00 - 17:00 (8회 142, 총 208)	08:00	17:00	08:00	17:00	142	68%	77%		
		가공명	02003(CS12702H30-01-2)	시작	08:00	종료	17:00	실적	142	가동률	77%
		가공 시작 시간	08:00	가공 종료 시간	17:00	가공 완료 시간	08:00	가공 실적	142	가공률	68%
		가공 시작 시간	08:00	가공 종료 시간	17:00	가공 완료 시간	08:00	가공 실적	142	가공률	68%
Lynx220LSY	05223(CS86020H30-02-2)	08:00 - 17:00 (8회 142, 총 208)	08:00	17:00	08:00	17:00	199	95%	89%		
		가공명	05223(CS86020H30-02-2)	시작	08:00	종료	17:00	실적	199	가동률	89%
		가공 시작 시간	08:00	가공 종료 시간	17:00	가공 완료 시간	08:00	가공 실적	199	가공률	95%
		가공 시작 시간	08:00	가공 종료 시간	17:00	가공 완료 시간	08:00	가공 실적	199	가공률	95%
Lynx220LC	02014(01238-0126-HE)	08:00 - 17:00 (8회 142, 총 208)	08:00	17:00	08:00	17:00	78	41%	84%		
		가공명	02014(01238-0126-HE)	시작	08:00	종료	17:00	실적	78	가동률	84%
		가공 시작 시간	08:00	가공 종료 시간	17:00	가공 완료 시간	08:00	가공 실적	78	가공률	41%
		가공 시작 시간	08:00	가공 종료 시간	17:00	가공 완료 시간	08:00	가공 실적	78	가공률	41%

Check real-time production status immediately and predict processing completion time immediately! Detailed production history management possible.

Main Workforce

We will help you grow your business through our experts in various fields.



Yoon Joon-saam

CEO

14 years of IT management + 12 years of manufacturing management



Park Jin-woo

Executive Director

Career highlights



Yoon Seok-hong

R&D Team Leader / MF

Career highlights



Jeong Hong-jae

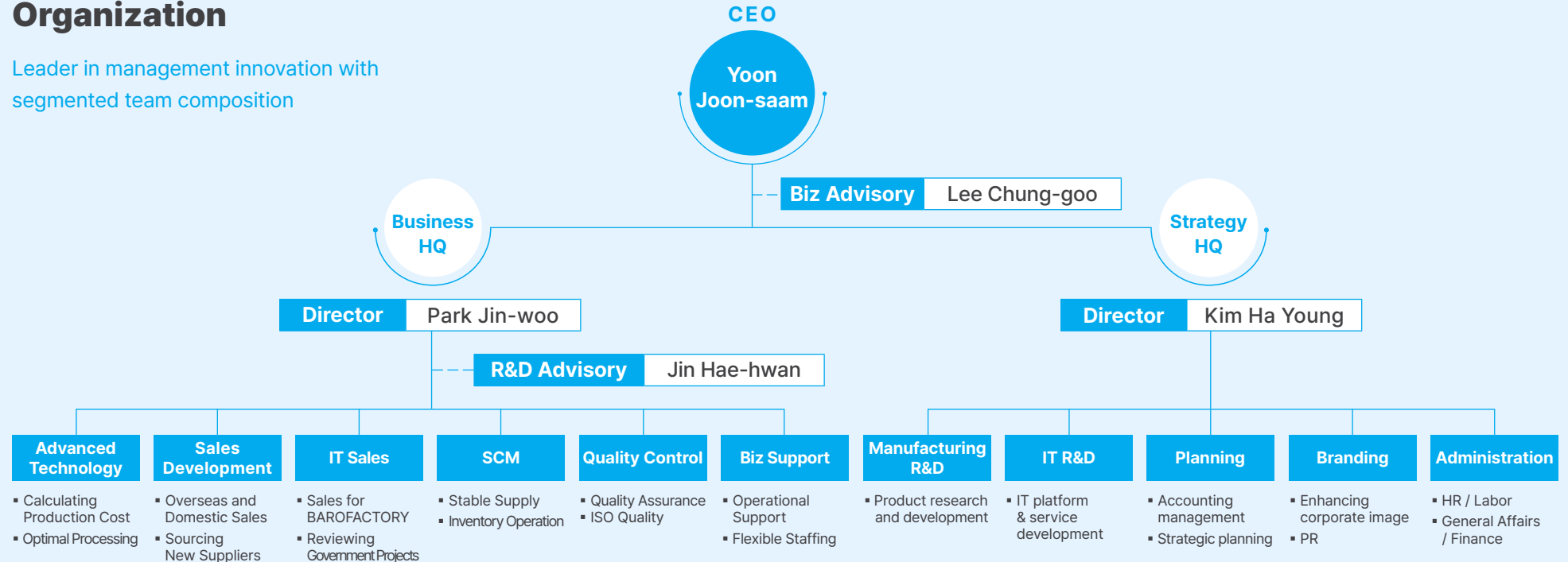
R&D Team Leader / IT

Career highlights



Organization

Leader in management innovation with segmented team composition



History

- 2022 [BAROFACTORY service started](#)
- 2021 Expansion and Relocation of Gimpo HQ
- 2010 Appointed Yoon Joon-saam as CEO
- 1999 Selected as a promising SME
- 1997 Corporation conversion
- 1992 Appointed Jeong Seon-mun as CEO
Started to supply bearings to overseas
- 1970 Founded by President Yoon Yeong-cheol in Jong-ro, Seoul

Awards·Patents·Certification

Awards

- 2003 Presidential commendation award
- 2023 Received the Minister of Trade, Industry and Energy Award
- 2023 Received a commendation from the Minister of SMEs and Startups

Patent

6 registrations | 7 pending | 2 overseas

- 2011 Radial Bearing
 - 2020 Bearing devices for cranes and aerial equipment vehicles
 - 2020 Bearing devices for cranes and aerial equipment vehicles with production method
- [Other 13 cases held](#)

Certification

- 1999 Quality Management System KS Q ISO 9001:2015
- 2021 INNOBIZ A Class
- 2022 Environmental Management System KS I ISO 14001:2015
- 2024 Confirmation of MAINBiz

Sales Growth and Goals



R&D Center

We achieve digital manufacturing innovation with abundant technical experience and data-driven ideas.

Key Collaborating Organizations



With over 50 years of experience in construction machinery and specialized bearings for heavy-duty vehicles, we conduct research and development to deliver reliable products for a range of applications including precision machinery and defense components.

MF Team Leader

Research Management | Design & Development of Product
New Product Development | Government R&D Project | AE Activities

Senior Researcher

New Product R&D | Government R&D Project Planning & Execution
AE Activities

Researcher

Development & Design (Mass Production & Improvement)
New Development Operations
Project Research & Development Administration



Improve quality by designing and managing quality-related processes. Improve customer satisfaction by establishing a plan for quality improvement. Improving quality awareness among organizational members through quality checking and training activities.

QM Team Leader

Develop and Implement Quality Strategy
Compliance with Quality Standards with Quality Problem Solving and Monitoring
Promote Quality Improvement

QA Staff

Problem-Solving, Training, Performance Monitoring
Perform Activities Related to Compliance with Quality Standards



The company comprises three main divisions: CORE technology for real-time data collection and processing from machine tools, data analysis for deriving insights, and SaaS-based service development for productizing. We enhance technical capabilities in each division through government R&D projects.

IT Team Leader

IT Research & Development Team Leader

Front-End

Web Interface Development for Site Monitoring
Back Office Development for Production Status and Analysis Viewing

Back-End

Data Storage and Handling in Cloud
Development of Analysis Logic and Restful API

Edge System Development

Real-time Collection and Initial Processing of Machine Data
Development of Cloud Transmission Technology

Data Analysis

Research on Machine Data Analysis, Discovery Insight, and Researching for application to AI



Government R&D Project Execution

Project	Duration	Agency
Development of Smart Manufacturing Digital Twin Platform	2020 - 2022	MSS in Korea
Development of AI-based Automated Production Planning Solution	2020 - 2022	MSS in Korea
Implementation of AIoT-based Smart Machine Tools	2022 - Ongoing	MSS in Korea
Development of Specialized Vehicle Slewing Drive	2023 - Ongoing	MSS in Korea
Development of Bearings for EV Drivetrains	2021 - Ongoing	MOTIE in Korea

연합시스템

Company Name	Yeonhap System Co., Ltd.
Established Date	1, Apr, 1970
Transition to Corporation	1, Apr, 1997
Number of Employees	43
Year Revenue	\$4.3 million
Building Area	3,629m ²
Address	<p>37.608083,126.6006542</p> <p>26, Hwanggeum-ro 323beon-gil, Yangchon-eup, Gimpo-si, Gyeonggi-do, Republic of Korea</p>

Contact us

Kevin Park 박진우

Business Division
| Executive Director

+82 10-4092-6557

 kevin@yhs-corp.com



Easy to Save

Nelly Kim 김재진

Future Strategy
| Team Manager

+82 10-5020-3875

 nelly@yhs-corp.com




Easy to Save

Luke Yi 이옥래

Future Strategy
| Senior Staff

+82 10-3930-9044

 Luke@yhs-corp.com



Easy to Save



 yhs-corp.com

 [Yeonhapsystem](https://www.youtube.com/yeonhapsystem)

 [yhs_corp_global](https://www.instagram.com/yhs_corp_global)